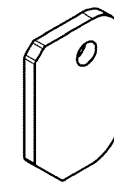


PŘEKLAD

dne 17. 12. 2014

PROVEDL/A

VISNA ZP.



THOUSTKA MAT.  
NEKST. RADIUS  
RADIUS 0076  
202 L22NA DEKA

- 2 -03- 2015

ARCHIV

2


NOTA :

- Metal sheet thickness : 6 mm
- Radii without dimension : R = 2
- Bend radii : R = 1
- Unfolded length ( for info ) = 1

✓ NZ 14/01402

Condition at time of delivery	
de-scaled (degree of purity SA 2 1/2 acc. ISO 8501-1)	X
without burrs acc. WN 11310	
Permissible top-end rounding during flame cutting (also positive bead acc. WN 10572)	
oil-free / free of grease	
oiled	
oiling permissible	X
Indicate the required condition at time of delivery with an X.	

First angle projection		02		Oiled --> Oiled permissible		T48720			
				09 --> 010.5 / Dim. 78 --> 47					
				Dim. 112 --> 69					
General tolerance (GT) in mm		Index		alteration		Change no		Fit	
Size range		Inspection dim.		Auxiliary dim.		Material: S235JR following EN10025-2		Weight: in Kg	
						Blank no:		0.3	
GT coarse		Date		Name		Title:		PROD.	
L 1 2 3 4		9.1.2014		J.Fonteny		support		Scale	
1 2 4 6		13.1.2014		F.Praust		mounting ring		1:1	
Lengths (L) and angle (L/Δ) = ± GT		Auth'd		R.Pelletier		Sheet:		1	
Tolerance Symbols ISO 1101		M.check		J.LeCesne		Drawing number		11914.010902	
○ roundness = 1/20-Tol.								of: 1	
-□ straightness/flatness = GT									
⊙ concentricity/run out = GT									
≡ symmetry = GT									
// parallelism = GT									
⊕ position = GT									
Languages: en,fr		Confidential document		Refer to protection notice ISO 1606		Repl.		Orig.	
								11914.010902d001	

LASER cutting tolerances					
NOTA : min cutting radius without dimensions R = 1 mm unless otherwise specified					
≤ 30	30 < ≤ 120	120 < ≤ 400	400 < ≤ 1000	1000 <	
± 0,5	± 0,8	± 1,0	± 1,5	± 2,0	

Released

11914.010902d001

A3